

VFC HOIST SC270/270GD

Characteristic:

- ✧ Power saving, startup current lower.
- ✧ Frequency control, smooth starting and braking.
- ✧ Small structural impact, low mechanical wear.

Technical Data:

Name	Unit	Parameter
Payload capacity	Kg	2 × 2700
Speed	m/min	0~46
Max. lifting height	m	600
Erection load capacity	kg	1000
Lifting device capacity	Kg	250
Safety device		SAJ60
Motor control		VFC
Power supply		380V/50Hz/3Phase
Motor power	KW	2 × 3 × 11, Nord
Motor rated current	A	2 × 120
Power supply fuses	A	2 × 160
Power supply capacity	KVA	≥ 2 × 79
Freq. converter power	KW	2 × 75
Cage size	m	3.8 × 1.5 × 2.5
Door opening	m	1.42 × 2.0
Mast section type	m	0.65 × 0.65 × 1.508



We adhere to the principle of safety and quality first, to provide customers with safe and reliable products.

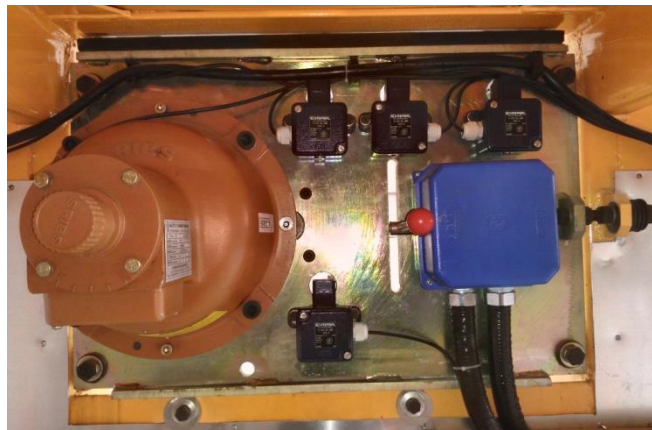
Woodland, Dale Street, Longwood, Huddersfield HD3 4TG

Tel: 01484 655300 Fax: 01484 655301

Email: Steven.Wright@yorkshire-hoist.co.uk Web: www.yorkshirehoistltd.co.uk

VFC HOIST SC270/270GD

The main part and weight:



Name	Unit	Weight
Cage	Kg	2000
Driving	Kg	780
Enclosure	Kg	1800
Mast Section	Kg	160 (ϕ 76 \times 4.5)
Twin Rack		165 (ϕ 76 \times 6)
		185 (ϕ 76 \times 8)
		200 (ϕ 76 \times 10)

NOTE

The standard cage dimension is 3.8x1.5x2.5m,
other available cage dimensions 3.6x1.5x2.5,
3.8x1.5x2.5, 4.0x1.5x2.5, 4.2x1.5x2.5, 4.6x1.5x2.5